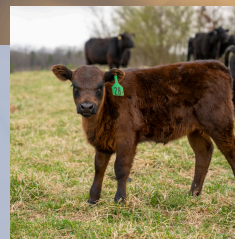




# Membership Benefits

## AG NEWS, NEWSLETTER, AND E-NEWS

- Monthly publication of current organizational and agricultural issues in the Montana Grassroots newsletter. Quarterly MFU Magazine delivery
- Legislative bill updates by email and Zoom
- Weekly e-news updates on important agricultural issues and upcoming events, educational opportunities, and workshops important to rural communities and agriculture



## SUMMER CAMP PROGRAM

- Discounts on our youth camps at MFU's Arrowpeak Camp in the Highwood Mountains
- Membership discounts on facility rental of Arrowpeak Lodge & Camp

## YOUR VOICE IN DEMOCRACY

- Washington, DC Fly-ins
- State Legislative Lobbying input
- Access to National Farmers Union Legislative office in Washington DC
- State Legislative Drive-In

## INSURANCE BENEFITS

- Members receive a 5% discount on Farmers Union Insurance Automobile Policy
- Group Dental & Vision Benefits with competitive rates
- Insurance opportunities through Farmers Union Insurance
- Nationwide Pet Insurance

## GRANT FUNDING

- MFU Foundation Grant Funding Cycles for Education based Agriculture projects
  - Awarded more than \$30,000 for ag-based education projects in 2022
- Grants for FFA and 4-H clubs upon application
  - Donated more than \$100,000 to the FFA Foundation and FFA Projects in recent years; Donated more than \$20,000 to Montana 4-H Clubs and Foundation in recent years.

## SCHOLARSHIP PROGRAM

- MFU awards scholarships to members for qualifying High School, College & Non-Traditional Students

## ANNUAL CONVENTION INVITATION

- Producer members invited to MFU Annual State Convention to shape member policies and priorities

## LEADERSHIP AND ADVOCACY TRAINING OPPORTUNITIES

- Farmers Union Enterprise Leadership (FUEL) Program
- NFU Spring Advocacy Training
- Beginning Farmer Institute
- State Legislative Drive-In
- Youth Advocacy and Cooperative Training
- Free MFU Membership for Montana FFA and 4-H Members (+14 and up)

## EDUCATION AND WEBINARS

- Statewide education forums
- Producer's Conference
- Women's Conferences
- School Visits and Day Camps
- Youth Summer Camps at Arrowpeak
- Lunch & Learn: Ag Expert Webinars

## COMMUNITY & AMBASSADORS

- Access to local MFU Ambassador staff located all around the state to support you and answer your questions
- MFU-planned community gatherings & events in local communities all around the state
- Montana Farmers Union Book Club
- Meet with Farmers Union members in your community on the issues most important to you through Farmers Union locals and member events/gatherings.
- Sponsorships of local events and MSU Field Days

## MENTAL HEALTH

Farm Family Wellness Alliance mental health and wellness services are provided through a multi-layer approach.

The first layer is an online community called **Togetherall**.



Scan the QR Code to Learn More!

Find a broad array of peer-to-peer support and a library of self-paced resources. If needed, an additional layer of support is available through Personal Assistance Services (PAS)."

# EXCLUSIVE to Farmers Union Members:

## RETAIL, TRAVEL, AND MORE BENEFITS



### DISCOUNTS ON HOTELS & TRAVEL

- **Great Falls** - Staybridge Suites (10% off); Holiday Inn (\$94); Comfort Inn & Suites (\$89+tax); Hotel Arvon (10% off).
  - **Billings** - Billings Hotel & Convention Center (\$105)
  - **Bozeman** - Comfort Inn, 1370 N 7th Ave 15% off booked hotel room  
Best Western Plus GranTree Inn, 1325 N 7th Ave (10% off booked room rate, email [office@montanafarmersunion.com](mailto:office@montanafarmersunion.com) for access code).
  - **Kalispell** Best Western Plus Flathead Lake Inn and Suites  
\$118/night + tax (October - February)  
\$132/night +tax (March & April)  
\$234/night +tax (May-September)
  - **Helena** - Comfort Inn - 15% off booked rate
- Nationwide**
- LaQuinta Hotels - 10 % off their lowest rate
  - Motel 6 - 10% off
  - Wyndham Hotels - 20% off
  - Budget Rentals - 20% off
  - **Farmers Union Travel Planning:** Exclusive travel benefits and deals on flights, hotels, car rentals, and group travel for events above and beyond the benefits listed in this section. Contact [office@montanafarmersunion.com](mailto:office@montanafarmersunion.com) and ask about the Exclusive Travel booking website.



### RENTAL CAR DISCOUNTS

- Avis Car Rental discount: 25% off
- Budget Rentals - 20% off

### SOFTWARE & OFFICE SUPPLY BENEFITS

- Sprint discounted Cell Service, Constant Contact discount, CSAware discount, ODP Business Solutions (B2B Office Depot and Office Max savings).

### EMERGENCY PROTECTIVE BENEFITS

- Receive \$80 off of a single or family plan through EA+ (Emergency Assistance Plus)

### BOOT BARN DISCOUNT

- Enjoy 15% off on in-store purchases of Work or Western Boots, Work Apparel, Ranch Wear, Hats, Outerwear & Boot Care, let them know you are a Montana Farmers Union member at the register. This is active at all Boot Barn retail locations, nationwide.

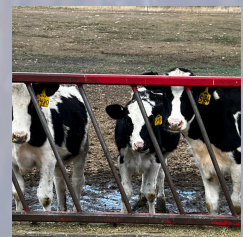
### CABELA'S & BASS PRO SHOPS DISCOUNTS

- Cabela's/Bass Pro Shops discount for members, 5% off on gift cards, 10% off third party brands, and up to 20% off on Bass Pro Shop/Cabela's branded clothing. Add an MFU Logo at the same time at no extra cost! The MFU Account # is 112-513-648 and place your order by calling 1-800-243-6626.

### EQUIPMENT & SUPPLY BENEFITS

(contact [mfu@montanafarmersunion.com](mailto:mfu@montanafarmersunion.com) for access codes for the following discounted rates)

- Johnny's Select Seeds - 5% off (contact [mfu@montanafarmersunion.com](mailto:mfu@montanafarmersunion.com) for the code)
- Working Person's Store - 10% off work wear, footwear, and outerwear
- Sow True Seed - 10% off
- Gempler's - 10% off
- Drone Launch Academy - \$50 discount
- Range Meat Academy - 10% off
- Farm Commons Producer Membership (Farm Business Law Commons) - 30% off
- CoolBot (build your own walk-in cooler with this walk-in cooler controller) - \$20 off your purchase
- FarmRaise (farm finance education) - 15% off your subscription
- Active and Fit Now: \$32/mo (at home fitness options)



For Access Codes and questions contact  
MFU's State Office at 406-452-6406 or  
[office@montanafarmersunion.com](mailto:office@montanafarmersunion.com)