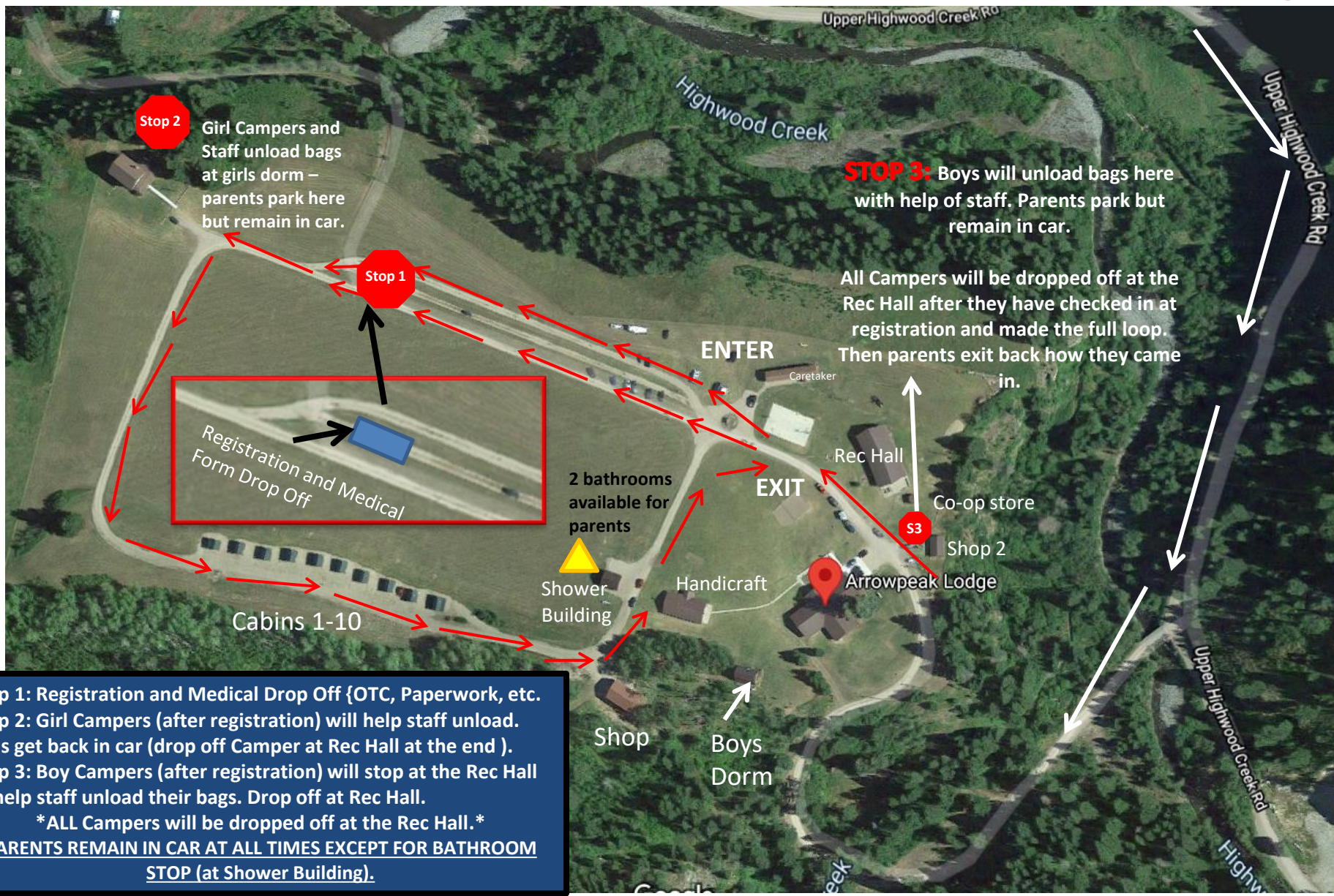


# ARROWPEAK DRIVE-THRU REGISTRATION!

Have all information ready! **MEDICAL, CO-OP MONEY, ANY CHANGES**

**PARENTS: PLEASE STAY IN YOUR VEHICLE AND PLEASE BE PATIENT 😊**



**Stop 1: Registration and Medical Drop Off {OTC, Paperwork, etc.}**  
**Stop 2: Girl Campers (after registration) will help staff unload.** Girls get back in car (drop off Camper at Rec Hall at the end ).  
**Stop 3: Boy Campers (after registration) will stop at the Rec Hall to help staff unload their bags. Drop off at Rec Hall.**

**\*ALL Campers will be dropped off at the Rec Hall.\***

**PARENTS REMAIN IN CAR AT ALL TIMES EXCEPT FOR BATHROOM STOP (at Shower Building).**